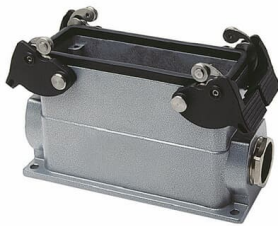




PRODUCT-DETAILS**BB024EMV****B24 DBL LOCK SYS 1XPG21-3/4 24CNT**

General Information

Extended Product Type:	BB024EMV
Product ID:	7TAA080030R0024
Catalog Description:	B24 DBL LOCK SYS 1XPG21-3/4 24CNT
Long Description:	Double lever locking box base, 24 contacts with ground connection, NPT entry - 1 Inch x 3/4 Inch
Display Name:	BB024EMV

Ordering

UPC:	786209984494
Country of Origin:	Germany
Selling Unit of Measure:	each

Container Information

Package Level 1 Units:	5 EA
-------------------------------	------

Package Level 1 Width:	165.1 mm 6.5 in
Package Level 1 Height:	120.65 mm 4.75 in
Package Level 1 Depth / Length:	311.15 mm 12.25 in

Additional Information

Brand / Label:	Pos-E-Kon
Effective Date:	20110602
Material:	Die-Cast Aluminum Alloy
Product Name:	OTHER PARTS F/EQU IN 8535
Product Type:	Box Base
Standards:	UL E215386
Surface Finishing:	Epoxy Powder Coated
Temperature Range:	-40 to +257 °F

External Classifications and Standards

ETIM 7:	EC000437 - Housing for rectangular connectors
ETIM 8:	EC000437 - Housing for rectangular connectors
ETIM 9:	EC000437 - Housing for rectangular connectors
ETIM 10:	EC000437 - Housing for rectangular connectors
UNSPSC:	39121424
IDEA Granular Category Code (IGCC):	4594 >> Terminal block covers

Material Compliance

RoHS Information:	Following EU Directive 2011/65/EU and Amendment 2015/863 July 22, 2019
WEEE Category:	Product Not in WEEE Scope

Categories

Products > Low Voltage Products and Systems > Installation Products > Wire Management and Connectivity > Pin & Sleeve Connectors

